

Procedure for Using Foil

1. Place ROOT END at the EDGE of the foil where it is marked "Place ROOT END HERE"
2. Straighten hair to full length along center crease of foil keeping the root ends together at the edge of the foil.
3. Fold foil down center line
4. Fold again LENGTHWISE
5. Wrap any excess hair extending beyond foil around the foil
6. Place in collection envelope

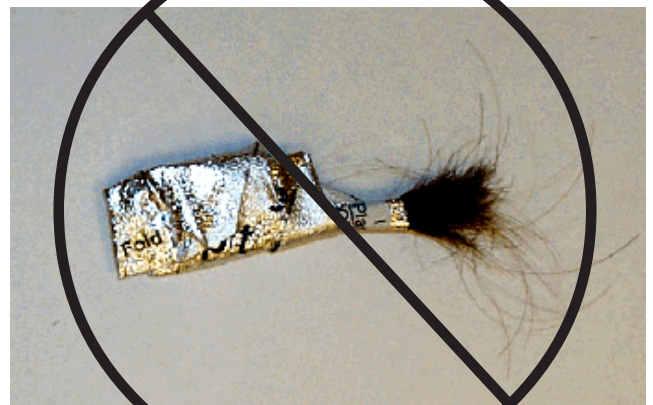


PLACE ROOT END HERE



FINISHED

NOTE - Please do not crumple the foil!



Omega Laboratories, Inc. * 400 N. Cleveland Avenue * Mogadore, Ohio * 44260
www.omegalabs.net * 800.665.5569