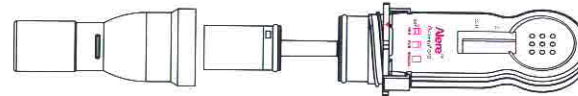


Sample Collection

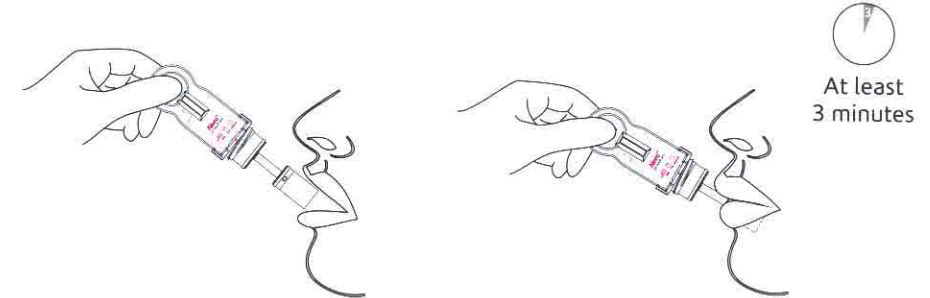
- 1 • Instruct the donor not to place anything in the mouth including food, drink, gum or tobacco products for at least 10 minutes.



- 2 • Remove Sample Collector Protector.

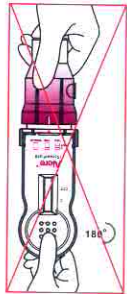
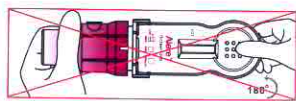


- 3 • Insert Sponge end of collector into mouth. • Actively swab the inside of the mouth and tongue with Sponge. As soon as the Sponge softens slightly, gently press the Sponge between the tongue and teeth to ensure **complete saturation**. The Sponge is saturated when no hard spots can be felt. Collect for at least three (3) minutes before removing Sponge. • Hand the saturated collector over to the tester.

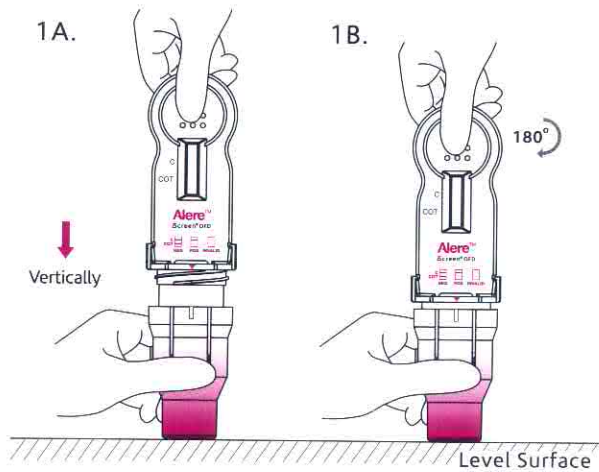


Testing

- 1 A. Insert the collector **vertically** into the Cap and **press down firmly** until the Cap reaches the thread. B. Twist the Handle clockwise 180° to tighten the Cap until the **Red Arrow** lines up with the other **White Mark**. C. Place the test device horizontally on a clean and level surface with the result window facing up.



Incorrect

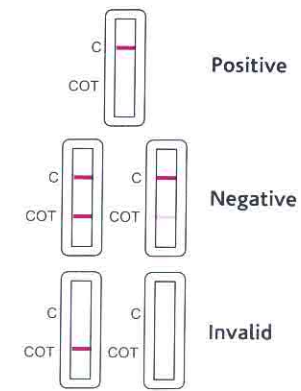


Correct

- 2 • Read results at 10 minutes.

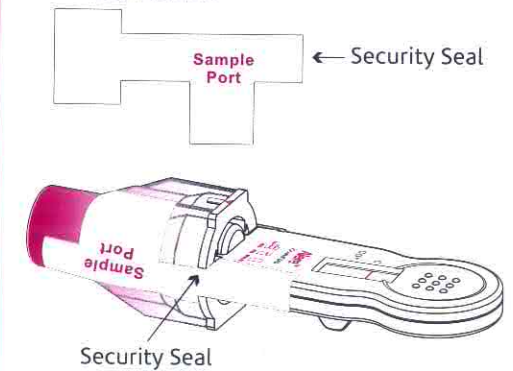


Read the drug strip results at 10 minutes. Test results stable up to 60 minutes.



- All positive results are presumptive. Professional judgment should be applied to any drug of abuse test result, particularly when preliminary positive results are indicated.

- 3 • If confirmation is requested, secure Cap with the Security Seal and send to a laboratory. The preferred confirmatory method is GC/MS or LC/MS/MS.



Manufactured for **Alere Toxicology Services – Products Division**
 Portsmouth, VA 23704 USA
 © 2012 Alere. All rights reserved.
 The Alere Logo, Alere and iScreen are trademarks of the Alere group of companies.